

Applications



Food Processing



Automobiles



Boiler Feed



Chemicals



Commercial Applications



Cooling Towers



Distillery



Fertilisers



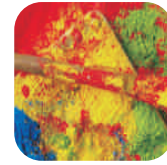
Food & Beverages



Hospitality



Hospitals



Paint Industry



Paper Industry



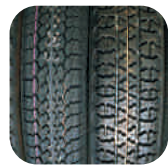
Petrochemical Industry



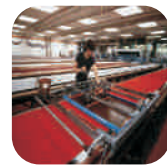
Poultry



Power Plants



Rubber Industry



Textile Industry



Tobacco Industry

Advantages

- Tulsion resins with high resistance to mechanical shock, longer life, high exchange capacity and low consumption of salt. The closely controlled resin bead size minimizes pressure loss.
- User-friendly, low maintenance & easy to install.
- Variety of cost effective standard models.
- Improved aesthetics & rugged design.
- Simpler distribution & collection systems.
- Easily up-gradable for higher output.
- Easy operation & maintenance.
- Quick availability.



THERMAX

Sustainable Solutions in Energy & Environment

Water & Waste Solutions

Sai Chambers, 15 Bombay - Pune Road, Wakewadi, Pune 411 003, India
Tel.: 020 2554 1010
020 2554 2235
Fax: 020 2551 1235/ 36
Email: wvs@thermaxindia.com

AHMEDABAD

Tel.: 079 26575408/ 65219430
Fax: 079 26577270
E-mail: aadmin@thermaxindia.com

BENGALURU

Tel.: 080 22371721 - 25
Fax: 080 22371726
E-mail: adminblr@thermaxindia.com

CHENNAI

Tel.: 044 24303400
Fax: 044 24353841
E-mail: chennaidivsupp@thermaxindia.com

HYDERABAD

Tel.: 040 23310254/ 23312013
Fax: 040 23312335
E-mail: hyd_sec@thermaxindia.com

KOLKATA

Tel.: 033 22826711/ 12
Fax: 033 22826796

MUMBAI

Tel.: 022 67542222/ 300
Fax: 022 22040859
E-mail: psecret@thermaxindia.com

NEW DELHI

Tel.: 011 46087200/ 201
Fax: 011 26145311/ 26140182
E-mail: cdelhi@thermaxindia.com

www.thermaxindia.com

International offices at

Indonesia, Russia, Kazakstan, Saudi Arabia, Malaysia, Bangladesh, Belgium, Sri Lanka, China, Philippines, Thailand, UAE, Kenya, Nigeria, Brazil, UK, USA

Thermax Business Portfolio

Water & Waste Solutions

Air Pollution Control

Chemicals

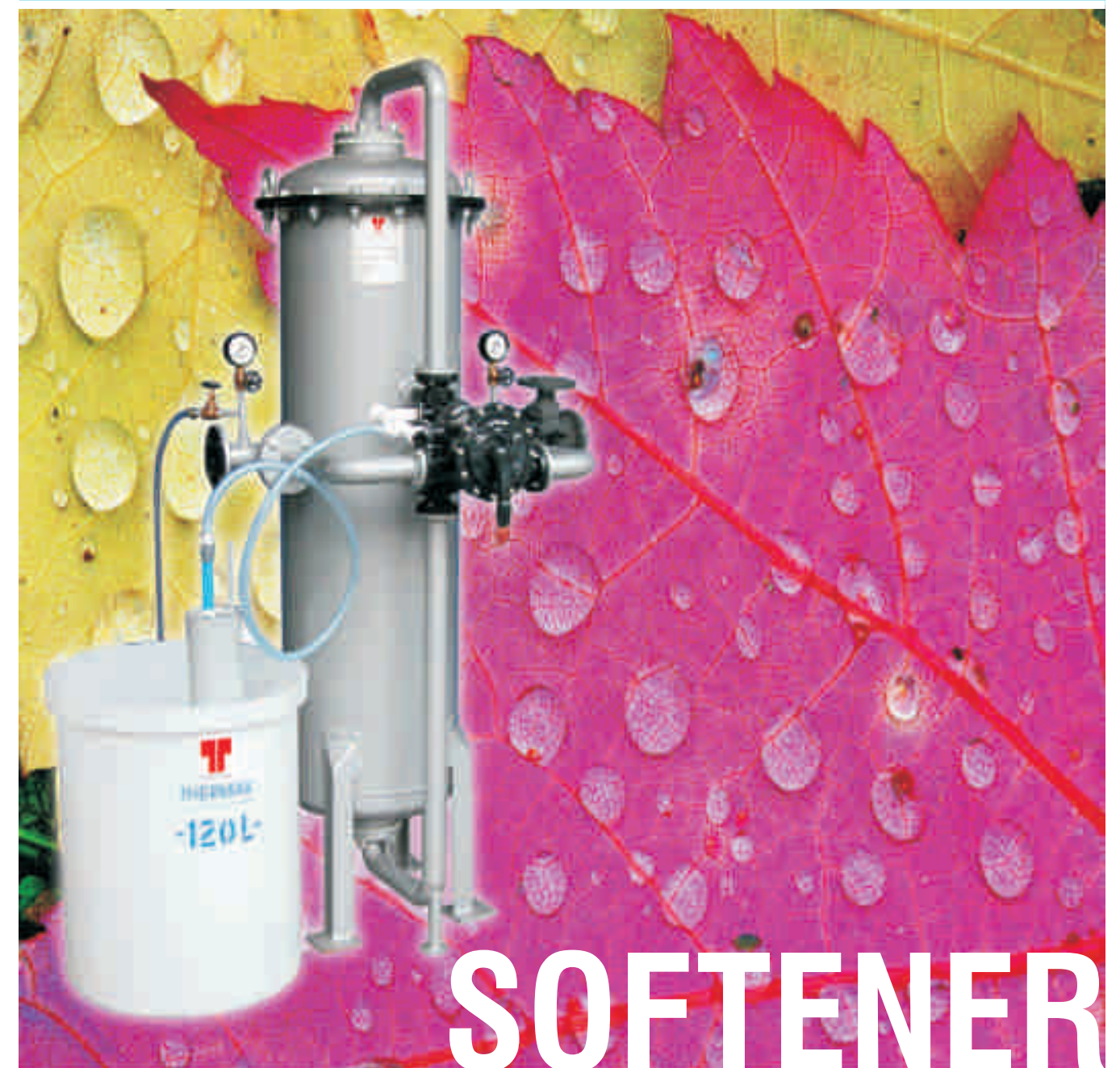
Boilers & Heaters

Absorption Cooling

Power



Water & Waste Solutions



SOFTENER

Compact & Flexible Softening Systems

Improving your business is our business

Thermax offers products, systems and solutions in energy and environment engineering to industrial and commercial establishments around the world. Its business expertise covers heating, cooling, waste heat recovery, captive power, water treatment & recycling, air pollution control & waste management and performance chemicals.

Thermax brings to customers extensive experience in industrial applications and expertise through technology partnerships and strategic alliances.

Operating from its headquarters in Pune (Western India), Thermax has built an international sales & service network spread over South East Asia, Middle East, Africa, Russia, UK and US. It has full fledged ISO 9001:2000 and ISO 14000 accredited manufacturing setup.

Water & Waste Solutions Division

offers expertise in water management recycling. Its water and waste water treatment systems support power plants, oil & gas installations, fertilisers, petrochemicals and others. Its waste management systems serve health and hospitality sectors, townships and colonies.

SOFTENER

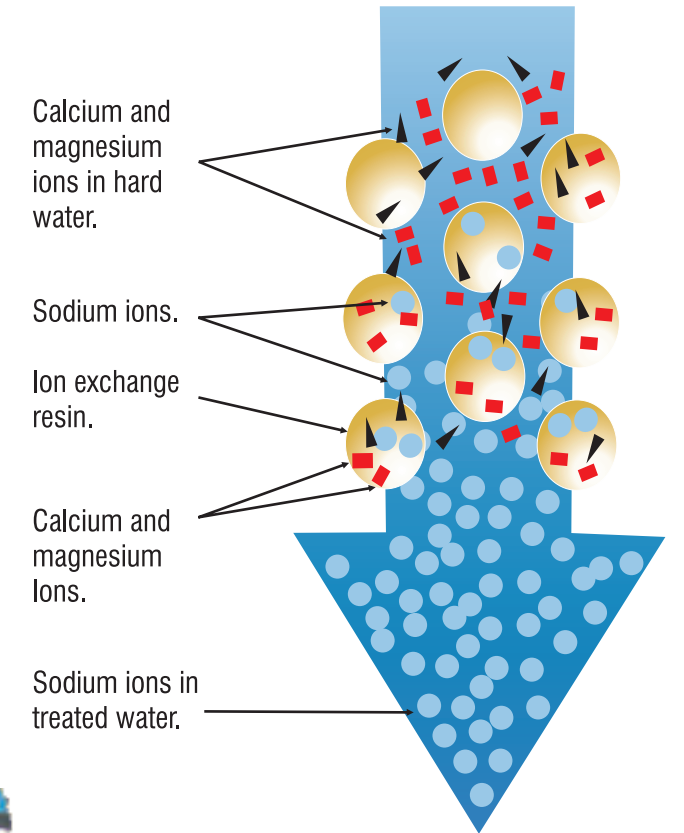


Introduction

Softening is a widely used Technology for reducing hardness forming ions (Ca & Mg) which precipitate & scale at very low temperatures & pressures. Softening is a reversible ion exchange process wherein the hardness forming ions are exchanged with sodium ions present in the resin group. Thermax offers a wide range of Softening plants with versatility in flow, flexibility in resin quantities & ease in operation. Thermax is one of the largest manufacturers of the strong acid cation resin used in this process.

Operating Principle

The raw water passes through a bed filled with small polystyrene beads known as ion exchange resins where sodium ions are exchanged for hardness forming ions. Once the resin beads are saturated with calcium and magnesium, the unit enters a regenerating cycle. The softener is regenerated with brine. Sodium in brine solution replaces the calcium & magnesium ions in the resin beads. Once the regeneration is over the softener



Technical Specifications

MODEL	CAPACITY	UNIQUE FEATURES
US	0.1 m ³ /hr - 25 m ³ /hr	FRP/ GRP range available upto 42" diameter.
EZ	3.5 m ³ /hr - 35 m ³ /hr	Sleek Softener range in MS with single valve operation.
SU	0.3 m ³ /hr - 25 m ³ /hr	Rugged packed bed Softener in up-flow operation.
FLEXI	3.5 m ³ /hr - 230 m ³ /hr	Softener range with flexibility in resin volumes.

Semi-Automatic versions for the above range are also available.