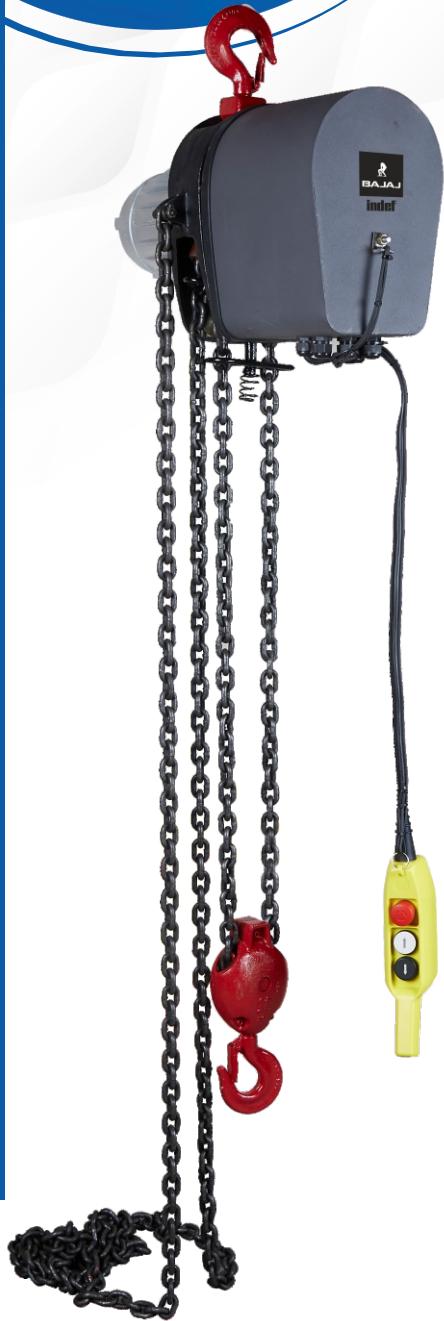


EH-II (BABY)

SERIES



ELECTRIC CHAIN HOIST

FEATURES

- Capacity of 0.5t to 2t and height of lift of up to 40 meters
- Grade 80 alloy steel load chain ensures
- Tested for an Safe Working Load 25% overload condition
- Rugged German design is proven over 50 years
- Aluminium alloy motor stator packet allows better heat dissipation
- Load chain wheel supported by two ball bearings
- Precision machine case with hardened steel alloy gears
- Fully pocketed load chain wheel is made of spheroidal graphite cast and alloy steel
- Unique chain guide to guard chain passage
- Chain stripper to safeguard the chain travel path
- Hazardous application variants are available

USPs

- Comes with a powerful conical rotor motor brake for a moderate number of start-stops and braking action
- Availability of electrical overloading detection and safety of the operator in select models
- Higher factor safety ensures maximum utility in areas with undefined load size
- Micro-limit switches for additional safety braking
- Low noise alloy steel hardened hoist gearbox grease lubricated
- Standard ergonomic pendant with emergency stop

BENEFITS

- Precise settings of the conical rotor brake motor for optimized consumption and long-life of motor windings
- Hoist with plug-and-play functionality
- Longer chain life
- Smooth, low-noise operation
- Assured safety
- Extended application capability

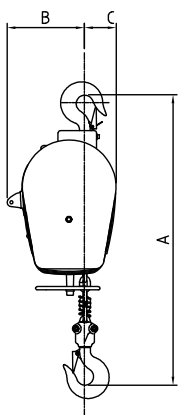


Fig. 1
1 FALL

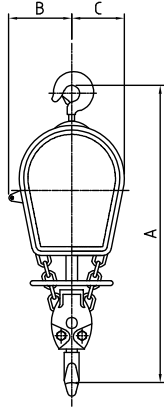


Fig. 2

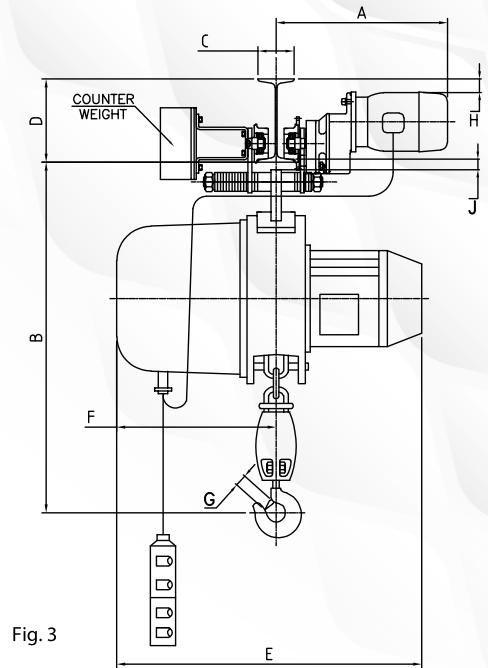
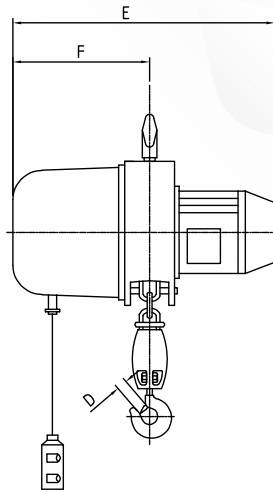


Fig. 3

"BABY" with hook suspension (Fig. 1 & 2)								
Capacity	MT	0.5	1	2		0.5	1	2
Chain falls	No.	1	2	4	A	720	750	860
Hoisting speed	m/mn	9	4.8	2.4	B	190	150	150
Hoist Motor	H.P.	1.5	1.5	1.5	C	80	120	120
*Height of max. lift (Std. 3m)	m	19.2	9.6	4.8	D	31	31	37
Length of control cable	m	At your choice			E	525	525	525
Approx. wt. with chains for 3m. lift	kg.	59	63	65	F	285	285	285
Approx. wt. per meter additional lift	kg.	1.3	2.6	5.2				

*Higher lifts offered on request

"BABY" with electric trolley (Fig. 3)								
Capacity	MT	0.5	1	2		0.5	1	2
Travelling speed	m/min.	10	10	10	A for C Max	500	500	500
					A for C Min..	395	395	395
					B	820	840	965
					C Max.	305	305	305
					C Min.	90	90	90
					D Min.	200	200	200
					E	525	525	525
					F	285	285	285
					G	31	31	37
					H Min.	23	23	14
					*J Max.	28	28	28
Approx. wt. with chains for 3m. lift	kg.	83	87	96				
Approx. wt. per meter additional lift	kg.	1.3	2.6	5.2				

*To calculate clearance under beam subtract beam flange thickness from 'J'

Data tolerance $\pm 10\%$

Note :- Due To Continuous development and improvement specification listed above may be changed without notice.

