

CH-III (ELECTRON)



ELECTRIC CHAIN HOIST

FEATURES

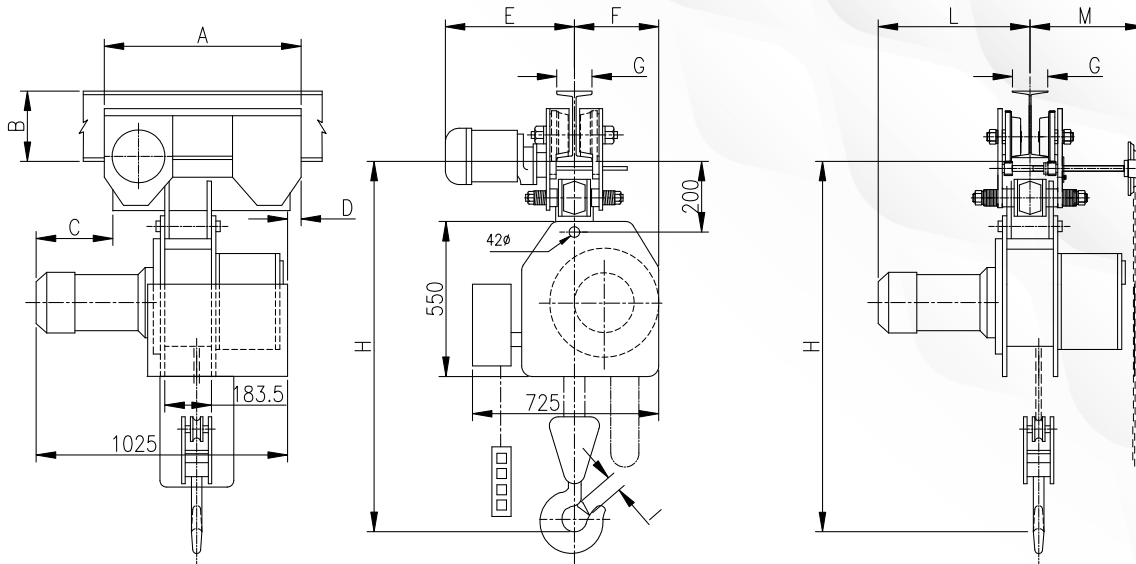
- Capacity suitably designed for a height of lift of up to 100 meters
- Grade 80 load chain for longevity
- Built with a powerful cylindrical rotor motor with an inbuilt brake for low maintenance and simpler assembly
- Separate brake, motor, gearbox, and panel unit are easily accessible
- Hardened alloy steel gears and a load chain wheel are precision machine cut
- Fail-safe disc brakes
- Suitable for use in both safe and hazardous environments
- Unique chain guard for chain passage
- Chain stripper to safeguard the chain path
- Micro limit switches for additional safety
- Electrical detection of overloading and safety of the operator

USPs

- Applicable for heavy, medium, and light duty
- Comes with a powerful conical rotor motor brake for a moderate number of start-stops and braking action capacity of 2.5T to 10T with a height of lift up to 100 meters
- Internal gears are made of carburised hardened alloy steel and lubricated for low-noise operation
- Hoist gearbox is housed in a steel metallic body
- Higher factor safety ensures maximum utility in areas with undefined load size

BENEFITS

- Noiseless operation
- Increased safety factor and longer chain life
- Modular construction
- Guaranteed safety and reliability
- Easy to use, adjust hoist



Electric chain hoist with electric trolley

Electric chain hoist with geared trolley

Type		CH-III				
Class		II				
S.W.L. (Tonne)	MT	2.5	5.0	7.5	10	
No. of falls		1	2	3	4	
	Fixed suspension	Kg.	328	381	402	427
Appr. weight at	with electric trolley	Kg.	500	525	550	600
3 mt. lift	with geared trolley	Kg.	376	451	553	578
Load Chain Size		mm	12*33	12*33	12*33	12*33
Extra weight per add. mt. lift (approx)		Kg.	3.3	6.6	9.9	13.2
Hoisting speed mts./min		MPM	5.2	2.6	1.7	1.3
Travelling speed mts./min		MPM	17	17	17	17
Hoisting motor		HP (kw)	5(3.7)	5(3.7)	5(3.7)	5(3.7)
Travelling motor		HP (kw)	0.5(0.37)	0.5(0.37)	0.75(0.55)x2	0.75(0.55)x2
A	Electric trolley	mm	730	730	730	930
	Geared trolley	mm	496	496	616	616
B-min (ISMB)	Electric trolley	mm	250	250	250	250
	Geared trolley	mm	200	200	300	300
C	Electric trolley	mm	345	345	345	164
D	Electric trolley	mm	60	60	60	72
E (min.-max.)	Electric trolley	mm	550-600	550-600	550-600	550-600
F (min.-max.)	Electric trolley	mm	260-303	325-368	385-428	325-368
L	Geared trolley	mm	720	720	720	665
M	Geared trolley	mm	455	455	455	510
G (min.-max.)	Electric trolley	mm	125-210	125-210	125-210	125-210
	Geared trolley	mm	125-160	125-150	140-180	140-180
H (min.-max.)	Electric trolley	mm	1050	1375	1500	1500
	Geared trolley	mm	1175	1425	1550	1550

Data tolerance ±10%

Note :- Due To Continuous development and improvement specification listed above may be changed without notice.

